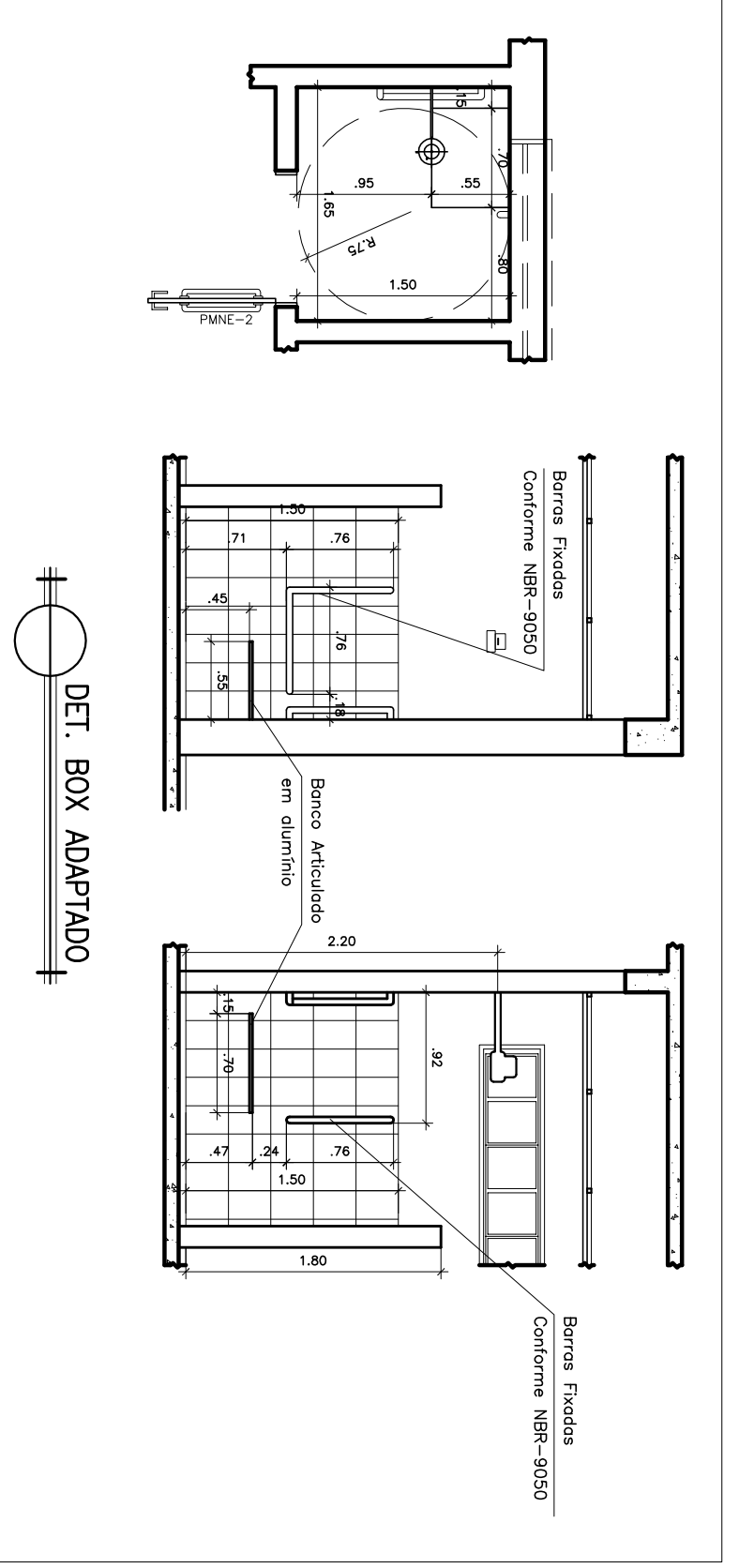
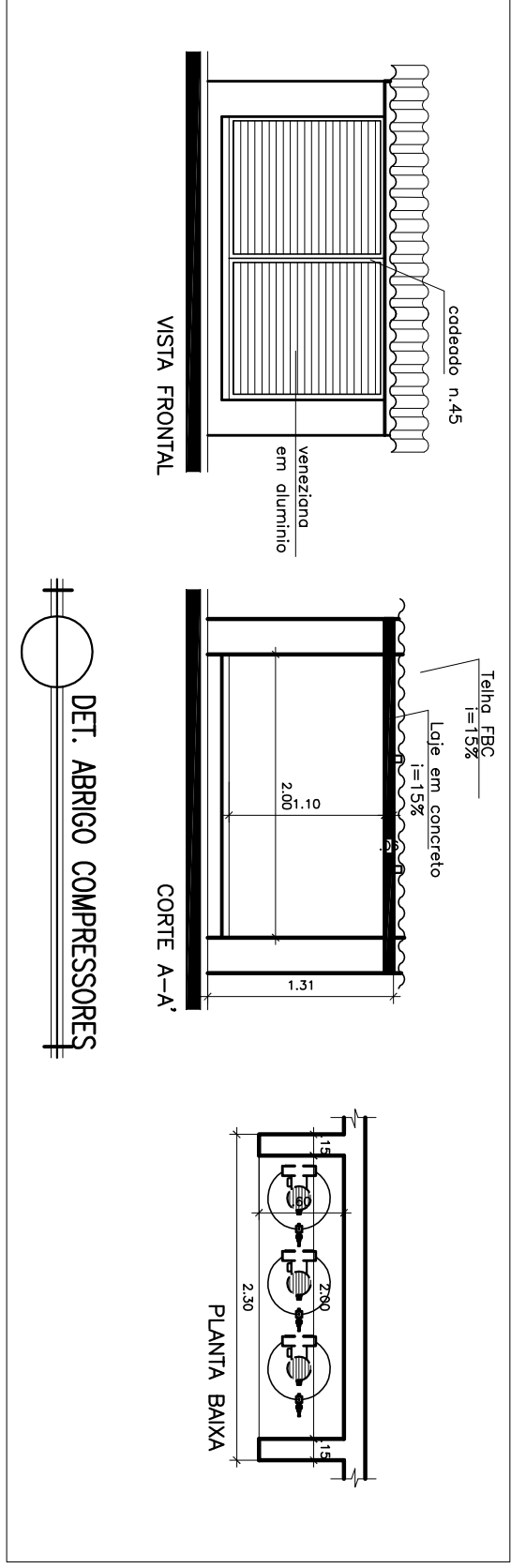
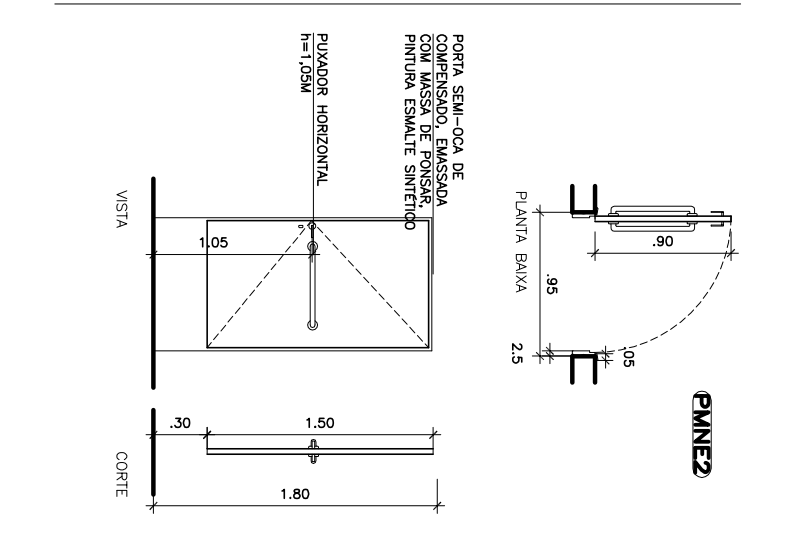


Figure 10 consists of two diagrams, labeled (1) and (2), showing the layout of a rectangular building footprint with a semi-circular extension. Both diagrams show a rectangular footprint with a semi-circular extension on one side. The dimensions are: width 1.05, length 2.10, and a semi-circular extension with a radius of 0.50. The total length is 2.10 + 0.50 = 2.60. The diagrams are labeled "PLAN (1)" and "PLAN (2)".



DEI. BARRIERO ADAPTAÇÃO

VISTA A

VISTA B

VISTA C

VISTA D

Barreira Plástica
Concreto NBR-2000

Barreira Plástica
Concreto NBR-2000

Barreira Plástica
Concreto NBR-2000

Muro de Tensão
Revestimento Regularizado o
Impedido até 1,20m
Proteção Integral